

# MULTI POINT THERMOCOUPLE

## T-953

Type of T/C	Description
K	Chromal/Alumal
J	Iron/Constantan
N	Nicrosil-Nisil
T	Copper/Constantan
E	Ni-Cr/Constantan
Other	Consult Factory
Ex. :	If Simplex - K Duplex - KK

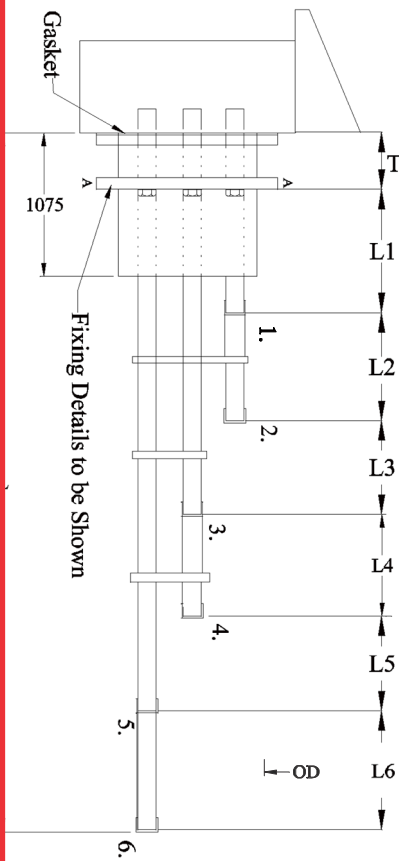
**Thermocouple Element**
**Termination Style**
**Junction Style**
**Sheath "OD"**
**Sheath Material**
**Length L1**
**Length L2**
**Length L3**
**Length L4**
**Length L5**
**Length L6**
**Length T**
**Nominal Length  
of T/C "L"**

J	Junction Box
---	--------------

GN	Grounded Rounded Tip
UN	Ungrounded Rounded Tip

1	Ø1mm
1.6	Ø1.6mm
3	Ø3mm
4.5	Ø4.5mm
6	Ø6mm
8	Ø8mm

316	SS 316
310	SS 310
304	SS 304
600	Inconel-600
800	Inconel-800
Other	Consult Factory



## Temperature Sensor Technology